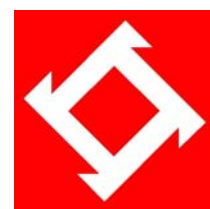


# Asian Studies Association of Australia

## 2011-12 Council



### President



**Purnendra Jain's** research and teaching interests concern the domestic and international politics of contemporary Japan specifically and regional politics of Asia Pacific generally. His current project examines Japan's strategic options and responses to the rise of China and India, funded by an ARC Discovery grant (2009–2011). As ASAA President, he aims to increase connections between the Association and scholars who work on Asia in various disciplines within public and private institutions but remain outside the Association's network. This will help to develop untapped synergies, widen the membership base, and strengthen the ASAA's academic pursuits and capacity for effective community voice.

### Vice President



**Kent Anderson** is a comparative lawyer specialising in Japan. He is Director of the School of Culture, History and Language in the ANU College of Asia and the Pacific and holds a joint appointment with the ANU College of Law. His research is focussed on insolvency, private international law, and recently the introduction of Japan's new quasi-jury system (*saiban-in seido*). As well as law subjects, Kent teaches advanced Japanese, the compulsory course in the Master of Asia Pacific Studies, and a suite of courses relating to Japanese law. He is active in promotion of Asia-Pacific Studies in the public sphere by serving on the NALSSP advisory committee, Asia Education Foundation board, and the 2020 Summit; and by working with relevant government departments, Embassies and funding bodies to promote Asia Literacy.

### Secretary



**Michele Ford** chairs the Department of Indonesian Studies at the University of Sydney, where she researches and teaches about social activism in Southeast Asia, with a particular focus on labour movements. She also contributes to the Indonesian language program, teaching advanced units on human rights, development and politics. Michele has been secretary of the ASAA since mid-2006. In addition, she serves on the Indonesia Council, the ANU's Indonesia Project Advisory Board, the ACICIS Reference Group and the Sydney Indonesian Study Circle Organising Committee. In her spare time, she is coordinating editor for the online magazine *Inside Indonesia*.

### Treasurer



**Lenore Lyons** is Research Professor in Asian Studies at the University of Western Australia. She has been Treasurer of the ASAA since 2008, and Editor of the Women in Asia Series published by Routledge since 2009. Lenore is currently working on a project that examines migrant worker activism in support of female domestic workers in Malaysia and Singapore. She recently completed a major study of citizenship, identity and sovereignty in the Riau Islands of Indonesia (with Michele Ford). Over the course of her career, Lenore has been heavily involved in research training for higher degree students. She has organised Asia-Pacific Futures Research Network workshops for ECRs on a range of topics, and many national and international conference panels.

## Regional Councillors

### China



**Jason Lim** has just completed his two-year stint as a postdoctoral fellow in the Department of History at the National University of Singapore and from September 2010 he will be a Lecturer in Asian History at the University of Wollongong. His main teaching and research interests are on the modern history of China, Taiwan, Malaysia and Singapore and the overseas Chinese community in Southeast Asia. Jason has been a member of the Editorial Committee of the *Journal of the South Seas Society* since 2009. He aims to act as an effective bridge between the ASAA and China scholars.

### Japan and Northeast Asia



**Seiko Yasumoto** lectures at the University of Sydney in Japanese Studies and Asian Studies. She carries out research on media, culture and communication in Japan and East Asia. Her current research focus is on transnational media, cultural flows and television studies. She is an executive member of both SYNLAB and OSA (the oldest oriental academic society in Australia) and one of the co-editors of the Brazilian scholarly journal *Ilha Do Desterro*. She has been actively involved in the organization of media cultural communication research clusters and international workshops.

### South Asia



**Assa Doron** is a research fellow in Anthropology and South Asian studies at ANU. His research involves three main areas: the anthropological study of religion and politics; medical anthropology, and the anthropology of media and technology. Assa currently holds an ARC postdoctoral fellowship and is a member of a team working on an ARC Discovery project on media in India and an AusAID project on gender and violence in Asia. Assa has been actively involved in the organization of a number of cross-disciplinary international workshops/conferences, including as co-convenor of the Asia Pacific Week at ANU.

### Southeast Asia



**Kate McGregor** is senior lecturer in Southeast Asian History at Melbourne University, where she teaches Southeast Asian and Asian thematic history. Her research interests are memory and violence in the Asian region. Kate served six years on the ASAA Council, first as a general councillor and then as the regional councillor for Southeast Asia. She is also the secretary of the Indonesia Council. In 2001 she proposed and co-convened the first national Indonesia Council Open Conference as a means of bringing together established academics and postgraduates working on Indonesia. This conference is now a biennial national event.

### West, Central and Inner Asia



Minerva Nasser-Eddine is a Research Fellow with the Hawke Research Institute at the University of South Australia and the Director of *Al Hikma*-Middle East Advisory Agency. Her research and teaching interests are related to contemporary socio-political and cultural issues and developments in the Middle East and among its diaspora communities in Australia. Minerva is the South Australian representative of the Australian Arabic Council, recent past Chair of the Australian Arab Chamber of Commerce and Industry (SA Chapter), Trustee of the History Trust of South Australia, and its representative on the Migration Museum Foundation. She was a recipient of the Prime Minister's Centenary Medal in June 2003.

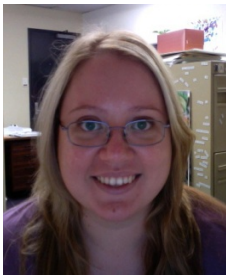
## General Councillors



**Michael Barr** is Head of the Department of International Relations, Flinders University where he lectures in both Asian Studies and International Relations. He also conducts Honours and Masters courses on religion, ethnicity and politics across both disciplines. His two areas of research focus are Singapore history, politics and society, and religious and ethnic nationalism in Asia. Michael was a member of the organising committee of the recent ASAA Biennial Conference and is a co-editor of the Proceedings of the conference.



**Amrita Malhi** is a visiting fellow in the College of Asia and the Pacific at the ANU. Her recent PhD thesis examined an Islamist forest uprising and holy war against colonial power in 1920s Malaya. She has also written on contemporary Islam and identity politics in Malaysia. Amrita is co-convening the Malaysia & Singapore Studies Association Colloquium in December, is teaching Asian environmental history at the ANU next year, and is experienced in campaigning and representation.



**Annie Pohlman** is the Program Leader for Southeast Asia at the Asia-Pacific Centre for the Responsibility to Protect, a regional genocide prevention research and advocacy centre at the University of Queensland. Between 2004-09, she taught Indonesian language, politics and history, Southeast Asian history and genocide studies at UQ. Annie has been an active member of the ASAA and is particularly interested in encouraging participation by postgrads and early career researchers in the association. She has convened four postgraduate conferences at UQ, and participated in numerous forums in Asian studies. She hopes to have the opportunity to contribute more to the ASAA.

## Postgraduate Representative



**Wayne Palmer** is a PhD candidate in the Department of Indonesian Studies at the University of Sydney. His research focuses on Indonesia's labour export program. Wayne received a University Medal for his 2008 Honours thesis on the use of public-private partnerships in the management of Indonesian migrant workers in Hong Kong and is currently a recipient of the Prime Minister's Australia Asia Endeavour Award. He was a member of the 2009 Indonesia Council Open Conference organising committee and co-edited a special edition of *Inside Indonesia* on labour migration, entitled 'Leaving Indonesia'.

## Co-opted Members of the Board



**Kathryn Robinson** is Professor in the Department of Anthropology, College of Asia and the Pacific at the Australian National University. She has been researching in Indonesia since 1976 on mining and development, gender relations, migration and the internet. She has served as vice president in 2008-2009 and as ASAA president in 2009-2010, and will sit on the 2011-12 Council as Immediate Past President. Professor Robinson is a fellow of the Academy of Social Sciences in Australia and the recipient of a citation for excellence in teaching from ALTC in 2008. She is also editor of the *Asia Pacific Journal of Anthropology*.



**Mina Roces** teaches in the School of History and Philosophy at the University of New South Wales in Sydney where she is also the Postgraduate Coordinator and Asian Studies Coordinator. Her current research interests include women's movements in the Philippines, transnational Filipinos and the politics of dress. She has been Publication's Officer of the ASAA since 2004 and is Regional General Asia Editor for the *Asian Studies Review*. Since 2006 she has been the Series Editor for Sussex Academic Press's Sussex Library of Asian Studies Series launched in 2007.



**Peter Jackson**, the editor of the *Asian Studies Review*, is Senior Fellow in the ANU's Research School of Pacific and Asian Studies. His interests include the histories of Buddhism, gender, sexuality, and globalisation in Southeast Asia. He is a general editor of Hong Kong University Press's new Queer Asia monograph series and with Jacquie Lo set up the ANU Asian and Pacific Cultural Studies Network in 2008. In collaboration with the Princess Maha Chakri Sirindhorn Anthropology Centre he established the Thai Queer Resources Centre in Bangkok in 2007.



**Sally Burdon** is the director of Asia Bookroom, an Asian specialist bookshop in Canberra. Sally is committed to exciting and involving the general public in Asia related ideas and issues. As well as encouraging Asia Literacy - literally(!) she organises regular talks and other events at Asia Bookroom. Sally is currently the Vice President of the Australian and New Zealand Association of Antiquarian Booksellers. Sally has served on the ASAA Council since early 2008.

*Maureen Welch also serves on the Council, representing the Asia Education Foundation.*